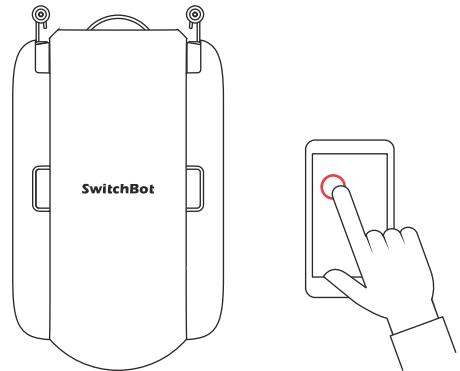


SwitchBot Curtain U Rail 2

User Manual



www.switch-bot.com

V4.0-2112

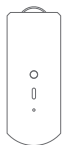
※ Please read this user manual carefully before using the device.

Contents

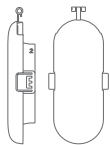
1. Package Contents	02
2. Name of Parts	03
3. Preparation	04
4. Installation	05
5. Control	13
6. Settings	17
7. Charging, Firmware and Factory Reset	18
8. Specifications	20
9. Return and Refund Policy	22
10. Contact and Support	23

Visit support.switch-bot.com for more support.

Package Contents



Main Body



Hook Pair (U Rail 2)



Hook Helper



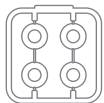
Type-C Cable



Hook Wheel

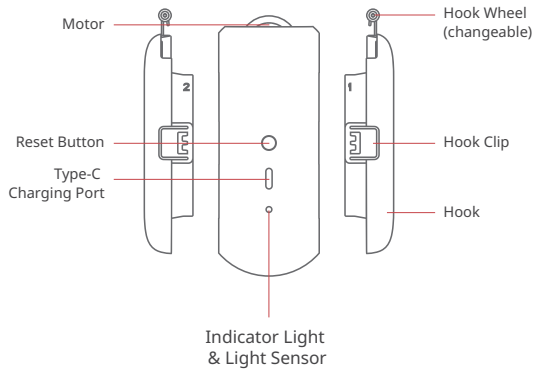


Clip



Hook Wheel Attachment

Name of Parts



Preparation

- A smartphone or tablet with Bluetooth 4.2 or above and Android 5.0 or above, iOS 11 or above.
- Download the SwitchBot app on App Store or Google Play Store.
- Open SwitchBot app and register for a SwitchBot account or sign in directly if you have an account.
- Charge SwitchBot Curtain for about 4 hours.
- (Optional) If you intend to use Cloud Services, you need to set up a SwitchBot Hub Mini (sold separately) and connect your phone to the internet.



Installation

Step 1: Add SwitchBot Curtain in the App

Create a SwitchBot account or sign in from the app's profile page. On the Home page, tap the top right + sign, select the Curtain logo and follow the instructions to add Curtain to your account.

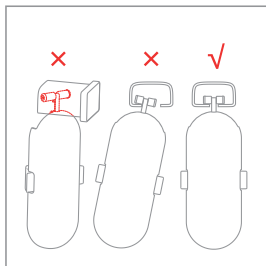
Step 2: Install on your Curtain Track

Find the best matching Hook Wheel

The Hook Wheel Pair has been attached to the device by default. There are some other different sizes in the pack. Follow the steps below to find your best fit pair.

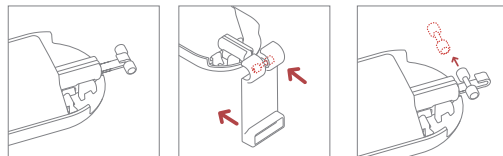
1. Insert the separate Hook into your curtain rail and rotate it by 90°. Pull the hook towards one side of the rail, tilt it back and forth to double check the fit.

- If the Hook cannot be inserted or rotated on your curtain rail, replace with a smaller pair of Hook Wheel.
- Try pull the Hook towards one side and tilt it, if it falls easily from the curtain rail, you need to replace with a bigger pair of Hook Wheel.
- If they fit perfectly, there is no need to replace them.

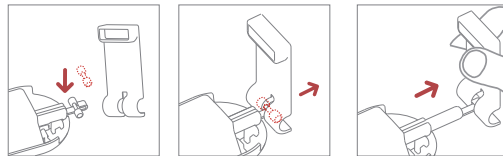


2. Replace the Hook Wheel

- ① Detach the existing Hook Wheel from the Hook (use Hook Helper for easier setup).



- ② Grab your desired size pair of Hook Wheel. Adjust them until you can see the metal bar. Insert the metal bar into the tip of the Hook. You should hear a click once it is firmly attached.

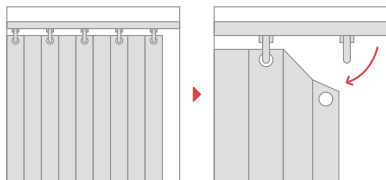


- ③ Repeat the same steps to change the pair of Hook Wheel on the other Hook.

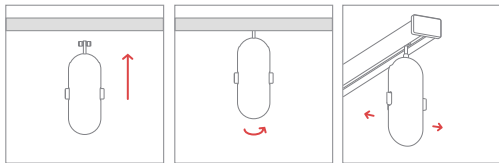
Install SwitchBot Curtain on your curtain rail

Method 1 Installation for Common Models

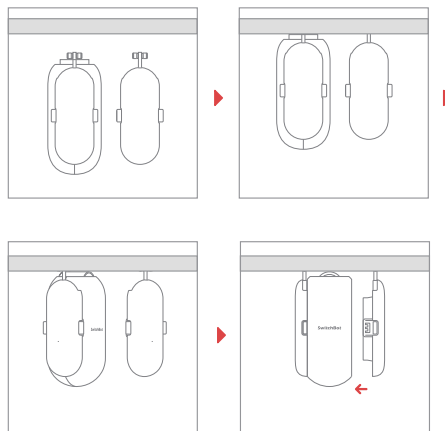
① Close your curtain and then detach the end curtain hook from the rail.



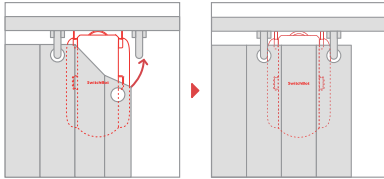
② Insert the separate Hook into the curtain rail and rotate it by 90°. Slide it left and right to see if it works smoothly, tilt it back and forth to double check if it fits inside the rail. If you tried with every pair of Hook Wheel provided and none of them work as expected, please contact our customer support at support@wondertechlabs.com.



③ Insert both of the Curtain's Main Body (with one Hook attached) and the separate Hook into the curtain rail simultaneously, rotate them by 90°, put the other Hook onto the Main Body. The SwitchBot logo should face your room.



④ Put the curtain back in place and hide the device with your curtain.

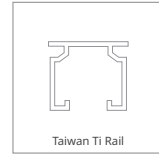


Method 2 Installation for Specific Models

If SwitchBot Curtain does not work smoothly on your curtain track, or if you know the specific model number of your track, this would be considered as a specific model.

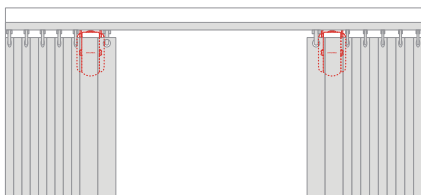
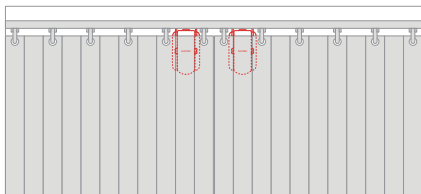
For installation method, please visit:

<https://support.switch-bot.com/hc/en-us/articles/1500012094841>



How to Control a Double Side Curtain

If you are using a double side curtain, we recommend you to use 2 SwitchBot Curtains to open it from the middle.



If you only purchased 1 SwitchBot Curtain, you may use the clips provided to join them and turn it into a single side curtain.

Note: Using a single SwitchBot Curtain may affect user experience.

Step 3: Calibration

This is for your device to adapt to your existing curtain track. You need to calibrate before you can control it from your phone or every time you change the Open Mode in the app. You can also redo the calibration on the settings page.

Control

App Control



Open and close your curtain at your fingertip. We offer an intuitive app control for iOS and Android, with weekly/bi-weekly updates, OTA firmware update is also available for better user experience.

Touch & Go



When you draw your curtains by hand sometimes, SwitchBot Curtain senses it and will kick in and do the work for you. For double side curtain, just pull either side. You can disable this at the Advanced Settings page.

* 5 cm lowers the possibility of false trigger by your pets.

Voice Control and Home Automation*

You can link various Cloud Services from your SwitchBot account using voice commands or scenes.

You must meet the following requirements in order to achieve voice control and automation

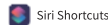
- Connect your smartphone or tablet to the internet
- Set a SwitchBot Hub Mini up (sold separately)
- Enable Cloud Services in Curtain's Settings page
- Link third-party services to your SwitchBot account

Alexa, close the curtain.

OK Google, close my bedroom curtain.

Hey Siri, open the living room curtain.

* Requires SwitchBot Hub Mini (sold separately)



Control with SwitchBot Remote (Sold Separately)



A wireless remote add-on to place anywhere.

Control SwitchBot Curtain using a SwitchBot Remote. There are two buttons on SwitchBot Remote and you can set an action for each of them from the app. Please refer to its user manual for more information.

Settings

Light Sensing (Beta)

This allows you to set automations based on the illuminance level or the relative intensity of sunlight. It's still in the beta stage and is being upgraded continuously, please explore the details in the latest app release.

Delay

You can set up 1 Delay for countdown action. You can set the countdown time, percentage of opening or closing, and Motion Mode.

Schedule

You can set up 5 Schedules on board, or unlimited Schedules with a SwitchBot Hub. You can set the day, time, percentage of opening or closing, and Motion Mode.

Charging, Firmware and Factory Reset

Charging

It takes about 6.5 hours¹ to fully charge the battery and it lasts 8 months after a full charge². You may also purchase our solar panel to charge by sunlight³.

1. 5V=1A adapter is required to charge the device.

2. Battery life is tested under condition of runway of 3 meters, loaded with 8 kg of curtain, opened and closed twice a day, 25°C. Battery life may vary given different condition.

3. When you wish to charge SwitchBot Curtain with Solar Panel, illuminance level 6 is required.

Firmware

Please upgrade in time for the most updated version.

Factory Reset

Hold the reset button for 15 seconds until the LED light lights up, then release the button. If you are using a double side curtain, you will need to redo the calibration on both SwitchBot Curtains.



Caution:

You may lose all the settings after factory reset and you may need to add the device again and redo calibration.

Specifications

Color: White / Black

Material: ABS plastic with UV-Resistant coating

Product Size: 42 x 51 x 110 mm (1.7 x 2 x 4.3 in)

Product Net Weight (Main Body): 135 g (4.8 oz)

Power: Type-C, DC 5V=1A, 3350 mAh lithium-ion battery or by Solar Panel¹

Battery Life: 8 months², or unlimited with Solar Panel

Connectivity: Bluetooth 5.0 Long Range

Sensor: Accelerometer, light sensor

Strength: Up to 8 kg / 17 pounds of curtain
(from controlled experiments in our lab)

Max Runway: 3 m (9.8 ft)

Timer: Up to 5, or unlimited with a SwitchBot Hub Mini³

Voice Control (SwitchBot Hub Required): Amazon Alexa, Google Assistant, Siri Shortcuts, SmartThings, IFTTT, and LINE Clova

1. Solar Panel is sold separately.

2. Battery life is tested under condition of runway of 3 meters, loaded with 8 kg of curtain, opened and closed twice day under 25 °C. Battery life may vary given different conditions.

3. SwitchBot Hub Plus/Mini is sold separately.

Note: Use under regular temperature only.

Return and Refund Policy

This product has a one-year warranty which begins from the date of purchase. The situations below do not fit the Return and Refund Policy.

- Intended damage or abuse.
- Inappropriate storage (drop down or soaking in water).
- Modify or repair of product.
- Natural wearing of product.
- Natural disasters.

The batteries are not in the warranty.

Contact and Support

Setup and Troubleshooting: support.switch-bot.com

Support Email: support@wondertechlabs.com

Feedback: If you have any concerns or problems when using our products, please kindly send feedback from the Profile > Feedback page in the SwitchBot app.

CE Warning

Manufacturer's Name: Woan Technology (Shenzhen) Co., Ltd.

Manufacturer's Address: Room 1101, Qiancheng Commercial Center, No. 5 Haicheng Road, Mabu Community, Xixiang Sub-district, Bao'an District, Shenzhen, Guangdong, P.R.China, 518100

Product name: SwitchBot Curtain

Model number: W0701600

Operating Temperature: -20 °C to 60 °C

This device was tested for fixed location operations. To comply with RF exposure requirements, a minimum separation distance of 20 cm must be maintained between the user's body and this device, including the antenna. Third-party belt-clips, holsters, and similar accessories used by this device should not contain any metallic components. Body-worn accessories that do not meet these requirements may not comply with RF exposure requirements and should be avoided. Use only the supplied or an approved antenna.

The device complies with RF specifications when the device used at 20 cm from your body.

This device in compliance with the essential requirements and other relevant provisions of S.I. 2017 No. 1206. All essential radio test suites have been carried out.

This device in compliance with the essential requirements and other relevant provisions of Directive 2014/53/EU. All essential radio test suites have been carried out.

Function	Operation Frequency	Max RF output power
Bluetooth	2402MHz~2480MHz	-1.42dBm

FCC Warning

This device complies with Part 15 of the FCC Rules. Operation is subject to the following two conditions:

- (1) This device may not cause harmful interference.
- (2) This device must accept any interference received, including interference that may cause undesired operation.

NOTE: This equipment has been tested and found to comply with the limits for a Class B digital device, pursuant to part 15 of the FCC Rules. These limits are designed to provide reasonable protection against harmful interference in a residential installation.

This equipment generates uses and can radiate radio frequency energy and, if not installed and used in accordance with the instructions, may cause harmful interference to radio communications. However, there is no guarantee that interference will not occur in a particular installation. If this equipment does cause harmful interference to radio or television reception, which can be determined by turning the equipment off and on, the user is encouraged to try to correct the interference by one or more of the following measures:

- Reorient or relocate the receiving antenna.
- Increase the separation between the equipment and receiver.
- Connect the equipment into an outlet on a circuit different from that to which the receiver is connected.
- Consult the dealer or an experienced radio/TV technician for help.

NOTE: The manufacturer is not responsible for any radio or TV interference caused by unauthorized modifications to this equipment. Such modifications could void the user's authority to operate the equipment.

FCC Radiation Exposure Statement

This equipment complies with FCC radiation exposure limits set forth for an uncontrolled environment. This equipment should be installed and operated with minimum distance 20 cm between the radiator & your body.

KCC Warning

인증받은자의 상호: Woan Technology (Shenzhen) Co., Ltd.

제품명/모델명: 특정소출력 무선기기(무선데이터통신시스템용 무선기기) / W0701600

제조사 및 제조국가: Woan Technology (Shenzhen) Co., Ltd. /China

제조년월: 2020.06

인증번호: R-R-Woa-W0701600

이 장치는 보안성이 없으므로 통신보안에 위배되는 사항의 통신을 금지하며 운용 중

NCC 警語：

依據低功率電波輻射性電機管理辦法

第十二條

※經型式認證合格之低功率射頻電機，非經許可，公司、商號或使用者均不得擅自變更頻率、加大功率或變更原設計之特性及功能。

第十四條

※低功率射頻電機之使用不得影響飛航安全及干擾合法通信；經發現有干擾現象時，應立即停用，並改善至無干擾時方得繼續使用。

-前項合法通信，指依電信法規定作業之無線電通信。

-低功率射頻電機須忍受合法通信或工業、科學及醫療用電波輻射性電機設備之干擾。

