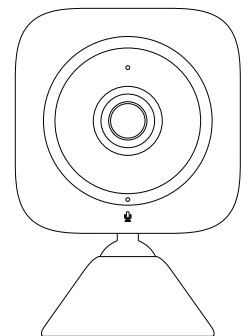
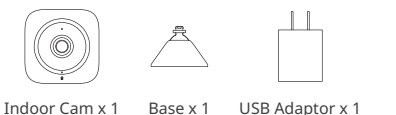


SwitchBot Indoor Cam

User Manual



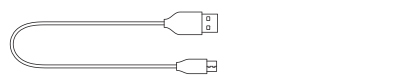
Package Contents



Indoor Cam x 1 Base x 1 USB Adaptor x 1



Screw Pack x 1 Sticker x 2 User Manual x 1



Micro USB Cable (2m) x 1

Specifications

Product Name: SwitchBot Indoor Cam

Power Input: 5V=1A

Video Resolution: 1080P HD

Image Compression: H.264

Micro SD Card: Up to 128GB, FAT32 format

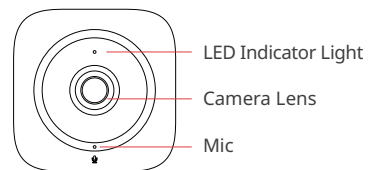
Operating Temperature: -15 °C to 45 °C (5 °F to 113 °F)

Relative Humidity: <95 %

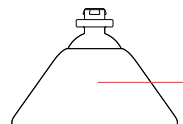
Wireless Standard: 802.11b/g/n (2.4GHz)

Name of Parts

Front

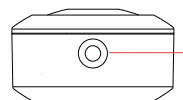


LED Indicator Light
Camera Lens
Mic



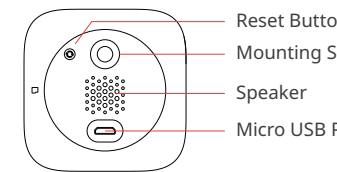
Base

Bottom

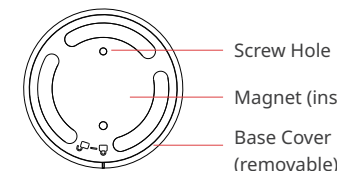


Mounting Slot

Back

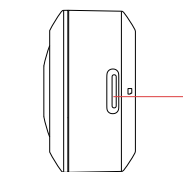


Reset Button
Mounting Slot
Speaker
Micro USB Port



Screw Hole
Magnet (inside)
Base Cover (removable)

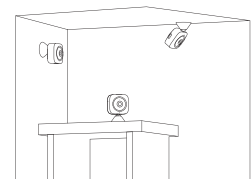
Side



Micro SD Card Slot

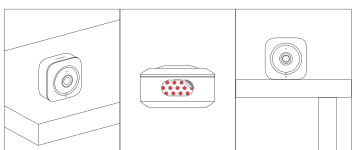
Install Indoor Cam

The indoor cam can be placed on table, wall, ceiling and other flat surfaces.



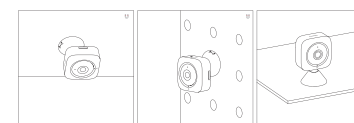
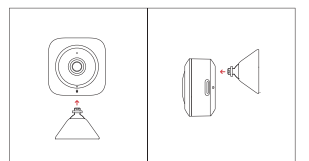
① Place indoor cam without the base.

Place indoor cam directly on a table or shelf or stick it on a flat surface using the 3M sticker.

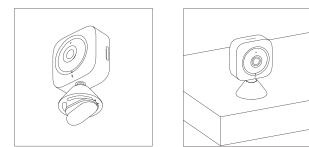


② Place indoor cam with the base.

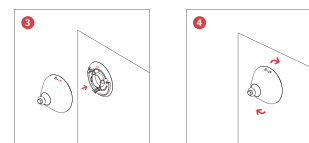
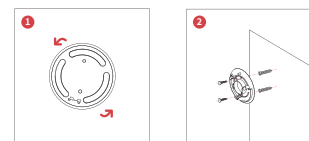
Mount the base to the back or the bottom of indoor cam. The base can be attached to an iron surface or a magnet.



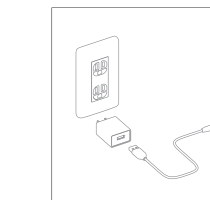
You can also stick the base to a flat surface using the 3M sticker. After indoor cam is properly installed, tilt to a desired angle.



The base can also be fixed with screws.



③ Connect the power cable.



Now the red light of the camera stays lit up. When the red light flashes quickly, this indicates that the camera is waiting for network distribution. You can start using the camera according to the steps from "Getting Started".

Getting Started

- 1 Download the SwitchBot app on App Store or Google Play Store.



iOS 11.0+



Android 5.0+

- 2 Create a SwitchBot account and sign in into the app.

- 3 Place Indoor Cam close to the router. Connect the USB cable to the back of Indoor Cam and to a 5V 1A USB adaptor. Then plug it into a power outlet.

- 4 On the app, tap the "+" icon on the top right of the Home page. Tap the "Indoor Cam" icon and follow the instructions to complete the setup.

Precautions

1. Scan the QR code to access the internet. Make sure that the screen of your phone is brighter than the surrounding environment.
2. Make sure the anti-rub function on Wi-Fi is turned off. If it is on, this may lead to a failure in connecting to the internet.
3. Please make sure the camera is connected to a 802.11b/g/n (2.4GHz), IPV4 wireless network.

How to Reset

Press the reset button on the back for 5 seconds or until you can hear a prompt tone.



Light Indication

Status of LED Indicator Lamp	Status of Indoor Camera
● Red Stays lit up	Device starting
● Red Flashes rapidly (0.25 s/ flash)	Pairing with network
● Green Flashes slowly (1.5 s/ flash)	Connecting with Wi-Fi router
● Green Flashes rapidly (0.25 s/ flash)	Connected to Wi-Fi router and now connecting to the internet
● Green Stays lit up	Decive is online
● Red + ● Green Flashes rapidly alternately (0.25 s/ flash)	Connected to Wi-Fi router but failed to connect to the internet
● Red + ● Green Flashes slowly alternately (1.5 s/ flash)	Error in network connection

Return and Refund Policy

SwitchBot Indoor Cam has a one year warranty (start from the purchasing day). The situations below do not fit the Return and Refund Policy

- Intended damage or abuse.
- Inappropriate storage (drop down or soaking in water).
- Modify or repair of product.
- Natural wearing of product.
- Natural disasters.

Contact and Support

Setup and Troubleshooting:
support.switch-bot.com
Support Email:
support@wondertechlabs.com

Feedback: If you have any concern or problem when using our products, please kindly send feedback from the Profile > Feedback page in the SwitchBot app.

CE Warning

Manufacturer's Name: Woan Technology (Shenzhen) Co., Ltd.

This product is a fixed location. To comply with RF exposure requirements, a minimum separation distance of 20cm must be maintained between the user's body and the device, including the antenna. Use only the supplied or an approved antenna.

This device in compliance with the essential requirements and other relevant provisions of Directive 2014/53/EU. All essential radio test suites have been carried out.

1.CAUTION : RISK OF EXPLOSION IF BATTERY IS REPLACED BY AN INCORRECT TYPE. DIS- POSE OF USED BATTERIES ACCORDING TO THE INSTRUCTIONS

2.The device complies with RF specifications when the device used at 20cm from your body

EU regulatory conformance

RF exposure information: The Maximum Permissible Exposure (MPE) level has been calculated based on a distance of 20cm between the device and the human body. To maintain compliance with RF exposure requirement, use product that maintain a 20cm distance between the device and human body.

CE DOC

Hereby, Woan Technology (Shenzhen) Co., Ltd. declares that the radio equipment type W1301200 is in compliance with Directive 2014/53/EU. The full text of the EU declaration of conformity is available at the following internet address: support.switch-bot.com

UKCA DOC

Hereby, Woan Technology (Shenzhen) Co., Ltd. declares that the radio equipment type W1301200 is in compliance with UK Radio Equipment Regulations (SI 2017/1206). The full text of the UK declaration of conformity is available at the following internet address: support.switch-bot.com

Address: Room 1101, Qiancheng Commercial Center, No. 5 Haicheng Road, Mabu Community, Xixiang Sub-district, Bao'an District, Shenzhen, Guangdong, P.R.China, 518100

Operation frequency(Max power)
Wifi:2412MHz-2472MHz(3.5dBm)

FCC Warning

This device complies with part 15 of the FCC Rules. Operation is subject to the following two conditions: (1) This device may not cause harmful interference, and (2) this device must accept any interference received, including interference that may cause undesired operation. Any Changes or modifications not expressly approved by the party responsible for compliance could void the user's authority to operate the equipment.

This equipment has been tested and found to comply with the limits for a Class B digital device, pursuant to part 15 of the FCC Rules. These limits are designed to provide reasonable protection against harmful interference in a residential installation. This equipment generates uses and can radiate radio frequency energy and, if not installed and used in

accordance with the instructions, may cause harmful interference to radio communications. However, there is no guarantee that interference will not occur in a particular installation. If this equipment does cause harmful interference to radio or television reception, which can be determined by turning the equipment off and on, the user is encouraged to try to correct the interference by one or more of the following measures:

- Reorient or relocate the receiving antenna.
- Increase the separation between the equipment and receiver.
- Connect the equipment into an outlet on a circuit different from that to which the receiver is connected.
- Consult the dealer or an experienced radio/TV technician for help.The device has been evaluated to meet general RF exposure requirement. The device can be used in portable exposure condition without restriction.

FCC RF exposure statement:
The equipment complies with FCC Radiation exposure limit set forth for uncontrolled environment. This equipment should be installed and operated with minimum distance 20cm between the radiator and your body.

KCC 경고

인증받은자의 상호: Woan Technology (Shenzhen) Co., Ltd.

제품명/모델명: SwitchBot Indoor Cam/W1301200
특정소출력 무선기기(무선데이터통신시스템용 무선기기) / W1301200

제조사 및 제조국가: Woan Technology (Shenzhen) Co., Ltd. /China

제조년월: 2021.04
인증번호: R-R-Woa-W1301200
이 장치는 보안성이 없으므로 통신보안에 위배되는 사항의 통신을 금지하며 운용 중

Safety Information

- This camera is for indoor use only.
- Keep the device away from water, fire, humid or hot environments.
- Unplug this device during lightening storms or when unused for long periods of time.
- Do not attempt to disassemble, repair, or modify the device.
- Do not use damaged charger or USB cable to charge the device.
- Do not use any other chargers than those recommended.
- Do not use the device where wireless devices are not allowed.
- Adapter shall be installed near the equipment and shall be easily accessible.